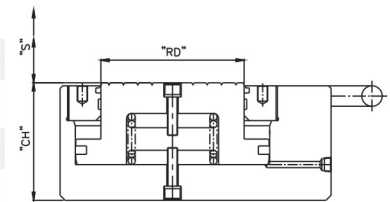
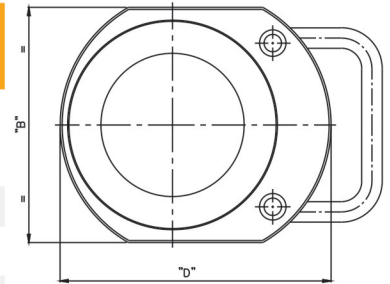


HYDRAUMECH®

Ultra Low Height Plain Ram Spring Return Hydraulic Flat Jack (FJS-Series)

Capacity :-5-200 Stroke:-8-16 mm Working :-700 bar (Max)

MODEL NO.	Capacity	Closed Ht. 'CH'	Stroke 'S'	Ram Dia 'RD'	Outer Dia 'D'	Oil volume	Approx Weight	Suitable Hand Pump
	tons.	mm.	mm.	mm.	mm.	cc.	kgs.	
FJS-5/8	5	35	8	25	60 X 45	7.2	0.5	PHP-200/2
FJS-5/16	5	43	16	25	60 X 45	12.9	1.0	PHP-200/2
FJS-10/12	10	45	12	38	80 X 60	19	1.3	PHP-200/2
FJS-20/12	20	51	12	50	100 X 80	40.5	2.6	PHP-200/2
FJS-30/12	30	58	12	65	117 X 95	57.5	3.0	PHP-200/2
FJS-50/16	50	65	16	70	140 X 120	113.5	6.0	PHP-400/3N
FJS-75/16	75	79	16	85	175 X 145	203.5	11.6	PHP-400/3N
FJS-100/16	100	85	16	100	185 X 160	257.6	17.1	PHP-400/3N
FJS-150/16	150	85	16	120	230 X 205	408.5	29.5	PHP-400/3N
FJS-200/16	200	115	16	140	265 X 230	510.3	45.0	PHP-400/3N



Features / Benefits :

- Compact, flat design, high strength, heat treated alloy steel body.
- Hard chrome plated ram to resist scoring and corrosion.
- Single acting spring return for smooth lowering. High pressure long life seals.
- Top mounting holes for easy fixturing. Grooved ram acts as integral saddle.
- 'O' Ring to arrest ingress of foreign particles.
- Port Size 1/4" and 3/8" NPT.
- QCC with Plastic dust cap. Aluminum dust cap on request.

