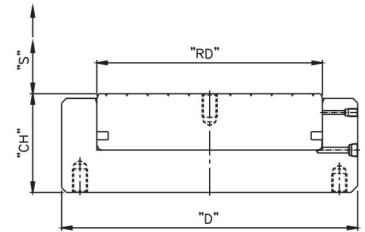


HYDRAUMECH®

Plain Ram Load Return Hydraulic Pancake Jack (PCP-Series)

Capacity : 10-300 Stroke : 20 mm Working : 700 bar (Max)

MODEL NO.	Capacity	Closed Ht. 'CH'	Stroke 'S'	Ram Dia 'RD'	Outer Dia 'D'	Oil volume	Approx Weight	Suitable Hand Pump
	tons.	mm.	mm.	mm.	mm.	cc.	kgs.	
PCP-10/020	10	40	20	45	85	40.5	1.6	PHP-200/2
PCP-20/020	20	45	20	63	100	80	2.5	PHP-200/2
PCP-30/020	30	50	20	75	110	113	3.5	PHP-200/2
PCP-50/020	50	60	20	100	140	200	6.8	PHP-200/2
PCP-100/020	100	80	20	140	176	395	15	PHP-200/2
PCP-150/020	150	85	20	170	225	580	25	PHP-400/3N
PCP-200/020	200	90	20	200	255	800	35	PHP-400/3N
PCP-300/020	300	100	20	240	310	1150	60	PHP-400/3N



Features / Benefits :

- Compact, pancake design, heat treated alloy steel body.
- Hard chrome plated ram to resist scoring and corrosion.
- Single acting, load return, Plain Ram.
- Grooved ram acts as integral saddle.
- High pressure long life seals.
- Port Size 1/4" and 3/8" NPT.
- QCC with Plastic dust cap. Aluminum Dust Cap on Request.
- Customised capacity and stroke on request

Application :

Pancake jacks are designed specifically where space is a constraint. Ideally used where no other cylinders fits for lifting, lowering, spreading of structures, bridges, heavy machinery etc.